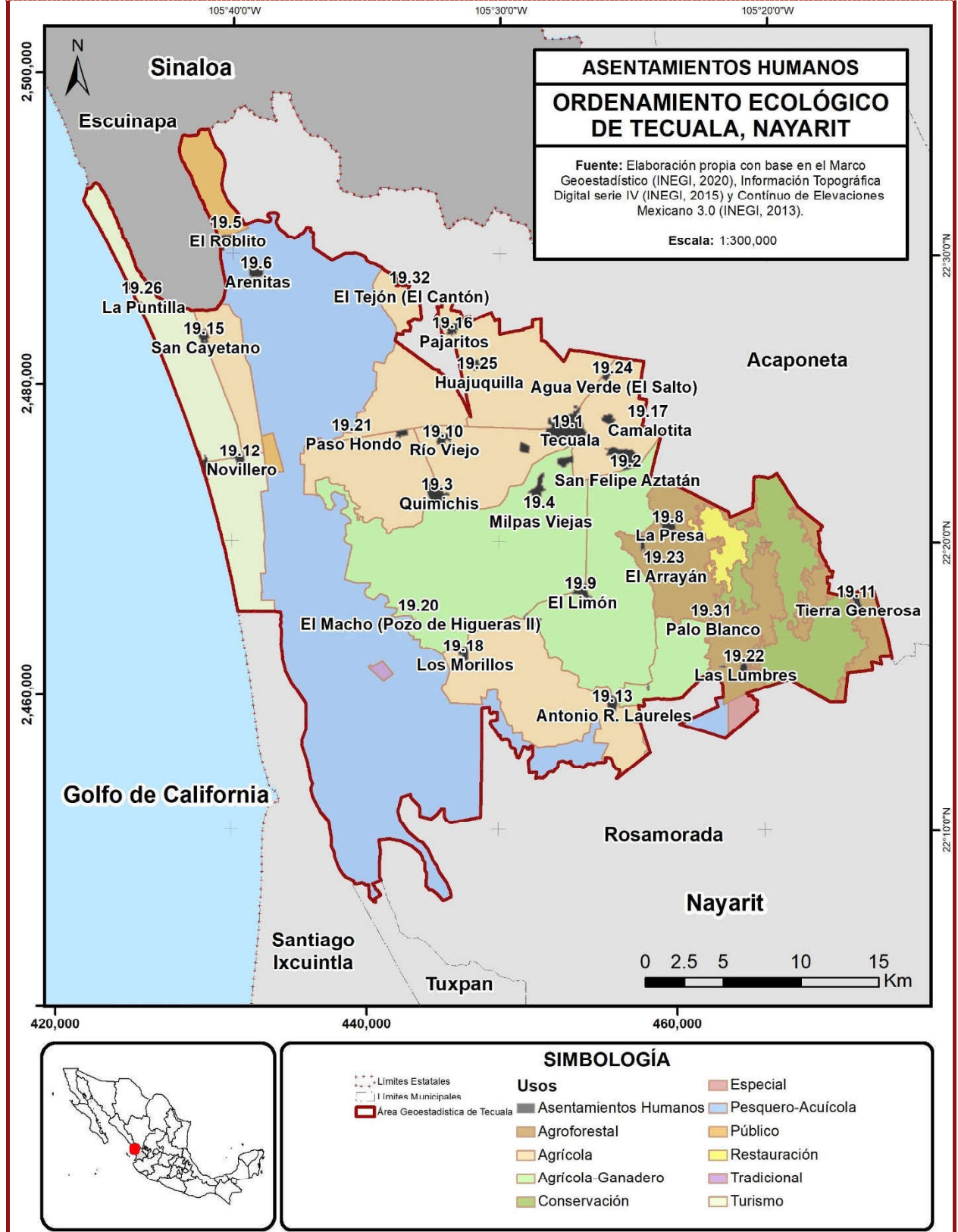


UGA 19 – CENTROS DE POBLACIÓN



CONSULTA PÚBLICA DEL PROGRAMA DE ORDENAMIENTO ECOLÓGICO LOCAL DE TECUALA

SUPERFICIE URBANA (DE RESERVA y ACTUAL) EN LA UGA 19 (hectáreas):

UGA	Nombre	Tipo	Reserva urbana		Superficie actual	Total
			PM-RBMNN	RAN		
19.1	Tecuala	AH-Urbano			319.76	319.76
19.2	San Felipe Aztatán	AH-Urbano			165.80	165.80
19.3	Quimichis	AH-Urbano			152.00	152.00
19.4	Milpas Viejas	AH-Rural			66.74	66.74
19.5	El Roblito	AH-Rural	39.99	4.49	13.59	58.07
19.6	Arenitas	AH-Rural	27.22		7.58	34.80
19.7	Playa Novillero	AH-Rural		4.88	48.68	53.56
19.8	La Presa	AH-Rural			53.61	53.61
19.9	El Limón	AH-Rural			51.55	51.55
19.10	Río Viejo	AH-Rural			49.51	49.51
19.11	Tierra Generosa	AH-Rural		2.04	46.45	48.49
19.12	Novillero	AH-Rural			45.61	45.61
19.13	Antonio R. Laureles	AH-Rural			45.57	45.57
19.14	El Filo	AH-Rural			44.50	44.50
19.15	San Cayetano	AH-Rural		3.39	39.29	42.68
19.16	Pajaritos	AH-Rural			36.07	36.07
19.17	Camalotita	AH-Rural			35.34	35.34
19.18	Los Morillos	AH-Rural			34.91	34.91
19.19	Atotonilco	AH-Rural			33.95	33.95
19.20	El Macho (Pozo de H.)	AH-Rural			29.97	29.97
19.21	Paso Hondo	AH-Rural			25.56	25.56
19.22	Las Lumbres	AH-Rural			23.25	23.25
19.23	El Arrayán	AH-Rural			19.59	19.59
19.24	Agua Verde (El Salto)	AH-Rural			18.05	18.05
19.25	Huajuquilla	AH-Rural			17.33	17.33
19.26	La Puntilla	AH-Rural			8.76	8.76
19.27	La Magdalena	AH-Rural			5.47	5.47
19.28	El Coacoyul	AH-Rural			5.44	5.44
19.29	Las Anonas	AH-Rural			3.49	3.49
19.30	Guamuchilito	AH-Rural			3.47	3.47
19.31	Palo Blanco	AH-Rural			0.49	0.49
19.32	El Tejón (El Cantón)	AH-Rural			0.00	0.00
Total			67.21	14.80	1,451.38	1,533.39

CONSULTA PÚBLICA DEL PROGRAMA DE ORDENAMIENTO ECOLÓGICO LOCAL DE TECUALA

CRITERIOS DE REGULACIÓN ECOLÓGICA:

UGA	Nombre	Población 2020	Criterios de Regulación Ecológica
19.1	Tecuala	13,620	A1, A7, A8, A9, A10, R1, R3, R4, R5, M1, M2, M3, CC4, CC5
19.2	San Felipe Aztatán	4,546	A1, A7, A8, A9, A10, R1, R3, R4, R5, M1, M2, M3, CC4, CC5
19.3	Quimichis	3,084	A1, A7, A8, A9, A10, R1, R3, R4, R5, M1, M2, M3, CC4, CC5
19.4	Milpas Viejas	1,574	A1, A7, A8, A9, A10, R1, R3, R4, R5, M1, M2, M3, CC4, CC5
19.5	El Roblito	220	A1, A7, A8, A9, A10, R1, R3, R4, R5, M1, M2, M3, CC4, CC5
19.6	Arenitas	221	A1, A7, A8, A9, A10, R1, R3, R4, R5, M1, M2, M3, CC4, CC5
19.7	Playa Novillero	248	A1, A7, A8, A9, A10, S1, S2, S3, R1, R3, R4, Z1, Z2, Z3, Z4, Z5, Z6, R5, M1, M2, M3, CC4, CC5
19.8	La Presa	1,103	A1, A7, A8, A9, A10, R1, R3, R4, R5, M1, M2, M3, CC4, CC5
19.9	El Limón	856	A1, A7, A8, A9, A10, R1, R3, R4, R5, M1, M2, M3, CC4, CC5
19.10	Río Viejo	905	A1, A7, A8, A9, A10, R1, R3, R4, R5, M1, M2, M3, CC4, CC5
19.11	Tierra Generosa	292	A1, A7, A8, A9, A10, R1, R3, R4, R5, M1, M2, M3, CC4, CC5
19.12	Novillero	921	A1, A7, A8, A9, A10, S1, S2, S3, R1, R3, R4, Z1, Z2, Z3, Z4, Z5, Z6, R5, M1, M2, M3, CC4, CC5
19.13	Antonio R. Laureles	459	A1, A7, A8, A9, A10, R1, R3, R4, R5, M1, M2, M3, CC4, CC5
19.14	El Filo	930	A1, A7, A8, A9, A10, R1, R3, R4, R5, M1, M2, M3, CC4, CC5
19.15	San Cayetano	796	A1, A7, A8, A9, A10, S1, S2, S3, R1, R3, R4, Z1, Z2, Z3, Z4, Z5, Z6, R5, M1, M2, M3, CC4, CC5
19.16	Pajaritos	709	A1, A7, A8, A9, A10, R1, R3, R4, R5, M1, M2, M3, CC4, CC5
19.17	Camalotita	1,218	A1, A7, A8, A9, A10, R1, R3, R4, R5, M1, M2, M3, CC4, CC5
19.18	Los Morillos	423	A1, A7, A8, A9, A10, R1, R3, R4, R5, M1, M2, M3, CC4, CC5
19.19	Atotonilco	757	A1, A7, A8, A9, A10, R1, R3, R4, R5, M1, M2, M3, CC4, CC5
19.20	El Macho (Pozo de H.)	690	A1, A7, A8, A9, A10, R1, R3, R4, R5, M1, M2, M3, CC4, CC5
19.21	Paso Hondo	507	A1, A7, A8, A9, A10, R1, R3, R4, R5, M1, M2, M3, CC4, CC5
19.22	Las Lumbres	232	A1, A7, A8, A9, A10, R1, R3, R4, R5, M1, M2, M3, CC4, CC5
19.23	El Arrayán	846	A1, A7, A8, A9, A10, R1, R3, R4, R5, M1, M2, M3, CC4, CC5
19.24	Agua Verde (El Salto)	462	A1, A7, A8, A9, A10, R1, R3, R4, R5, M1, M2, M3, CC4, CC5
19.25	Huajuquilla	406	A1, A7, A8, A9, A10, R1, R3, R4, R5, M1, M2, M3, CC4, CC5
19.26	La Puntilla	112	A1, A7, A8, A9, A10, S1, S2, S3, R1, R3, R4, Z1, Z2, Z3, Z4, Z5, Z6, R5, M1, M2, M3, CC4, CC5
19.27	La Magdalena	53	A1, A7, A8, A9, A10, R1, R3, R4, R5, M1, M2, M3, CC4, CC5
19.28	El Coacoyul	100	A1, A7, A8, A9, A10, R1, R3, R4, R5, M1, M2, M3, CC4, CC5
19.29	Las Anonas	64	A1, A7, A8, A9, A10, R1, R3, R4, R5, M1, M2, M3, CC4, CC5
19.30	Guamuchilito	157	A1, A7, A8, A9, A10, R1, R3, R4, R5, M1, M2, M3, CC4, CC5
19.31	Palo Blanco	67	A1, A7, A8, A9, A10, R1, R3, R4, R5, M1, M2, M3, CC4, CC5
19.32	El Tejón (El Cantón)	49	A1, A7, A8, A9, A10, R1, R3, R4, R5, M1, M2, M3, CC4, CC5